



Father and Son Pest and Lawn Solutions

NEWSLETTER

November 2024

WATERING INSTRUCTIONS

At the time of this writing (the last week of October), temperatures are cooling into the 70s and 80s but rain has been infrequent. Under these conditions, supplemental irrigation is usually necessary **1-2 days a week**.

However, this is Florida and the weather changes frequently. **If the weather pattern turns colder or we have frequent rain, irrigation should be stopped.**

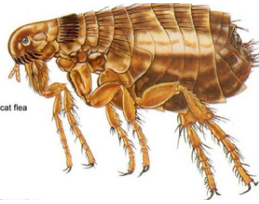
The best time of day to apply irrigation is while the dew is still on the ground, **between midnight and 8 AM**. This way, you're not extending the number of hours in the day the grass is wet. The longer the grass is wet, the more likely disease activity will occur.



What we are doing this month and why.

This month we will continue applying our fall/winter season fertilizer formula which contains potassium. Potassium encourages the grass to store carbohydrates in its root system. This stored energy will be used next spring when it comes out of dormancy. We are also continuing to apply pre-emergent weed control to suppress weeds. We will apply pre-emergent weed control throughout the year to keep constant pressure on weed populations. We are also applying post emergent weed control to control actively growing weeds.

Sod webworm activity has now ceased with the colder weather. Mole crickets are the only turf destroying insect that remains active through the winter. However, the colder it gets the less active they become. Disease is most active between 70° and 80°. We are approaching that temperature window now so we will keep a close eye out for disease activity and apply fungicide as needed when we notice disease activity occurring.



HOW EFFECTIVELY CAN FLEAS BE CONTROLLED BY OUTSIDE INSECTICIDE

TREATMENTS?

Outdoor flea treatments are not all that effective for the following reasons:

1. The treatment only lasts until the lawn is watered or it rains. Then the treatment is washed down into the ground away from where the fleas are.
2. Fleas have a lifecycle like a butterfly, egg, larva, cocoon, adult. The treatment will kill the adults and larva but not the eggs or pupa in cocoons leaving them to reinvest the area.
3. Wild animals are constantly reintroducing fleas into the yard.
4. Areas that have little grass and are mostly sand soak up the treatment before it can affect the fleas.

To effectively control fleas, recommend starting with getting the pet treated, then the inside of the home and lastly the lawn.

Indoor flea treatments use a combination of products that kill adult fleas and the eggs, last for weeks at a time and are more effective than outdoor treatments.

WHAT A STRANGE PLANT!!

You may have a century plant in your yard because you think it looks cool, like a huge aloe plant or a cactus.

One strange feature about this particular plant is it only blooms once in its lifetime and then dies! The blooms can be extraordinary, not necessarily because of their beauty but because of their size and how fast the bloom grows!

The flowers of the bloom hang on the tip of a stalk that can grow to over 2 stories high! This amazing stalk grows to this height in only a couple weeks.

Then, once the plant has bloomed and the stalk is through growing, the whole plant dies.



HOW TO ESTABLISH NEW SOD AROUND TREES.

I received a message from a home owner who questioned my recommendation of zoysia sod. He said he planted zoysia in his back yard and it died within a year.

The first thing I asked him was if he had any trees in his backyard. He replied "Yes, two large magnolia trees!"

New sod installed on top of root bound soil will not have a very long life span. It will be very difficult for the new grass to establish itself into the root bound soil and it will eventually decline within a year or two.

When installing new sod in areas where trees are growing, spread an inch or two of sand on top of the root bound soil to give the new grass some free soil space to establish itself in. By doing this you will ensure the longevity of the sod you install. By the way, also make sure that the tree canopies are high enough to let in sufficient light for the new sod to thrive.

PREFER TO RECEIVE A HARD COPY OF OUR MONTHLY NEWSLETTER?

A hard copy subscription to our newsletter mailed to you each month is available for only **\$47 per year!** Call our office today 850-939-9868 to request your hard copy subscription!

